

WWW.EXODUSDEVELOPS.COM



CONTEMPORARY
MASTERPIECE

PRESENTED BY

SAMANTHA LAMPTEY
BROKER OF RECORD/OWNER

5 FERNWOOD ROAD LIVINGSTON, NJ 07039

732 737 9013

EXODUS
REAL ESTATE



6



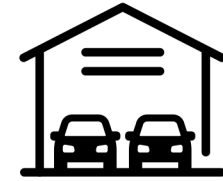
Bed

5.5



Bath

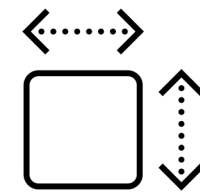
2



Garage

3200

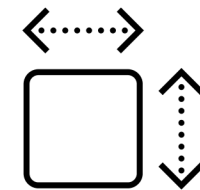
1st and 2nd level



SF

1500

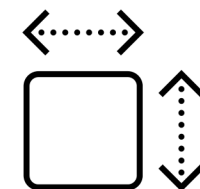
Basement



SF

4700

Total Living



SF

ABOUT 5 Fernwood

5 Fernwood is a contemporary masterpiece featuring 3,220 SF of living space and 1,500 SF of basement. Exquisitely designed with six -bedrooms, five and a half -bath this home includes two levels anchored by a striking custom staircase.

This smart home offers tranquility and an all-inclusive open floor plan upon a serene grand entrance leading you to soaring 30 ft high vaulted ceilings with impeccable detailed white oak wood ceiling accents and feature window. The custom chef's kitchen exudes opulence holding Miele appliances and custom Italian panel cabinetry with a tailored built island featuring a blend of white oak and quartz.

Additional features of the first level includes a guest en Suite, glass-enclosed wine cellar, adjacent to a formal dining area with cove lighting accentuated by white oak wood feature in ceiling .

The second level features 4 generous sized bedrooms, 3 full bathroom, full laundry room, tremendous closet space and access to storage attic. All bedrooms feature soaring vaulted ceilings and custom en suite bathroom with varying designs.

The primary suite features white oak paneled wall, vaulted ceiling with sky lights , custom built walk-in closet and an exquisite en suite bathroom with double-head walk-in rain showers, free-standing soaking tub and matte black fixtures.

The lower entertainment level offers a luxurious bar area, one bedroom, full bathroom and entertainment/family room, gym/ office/ storage area.

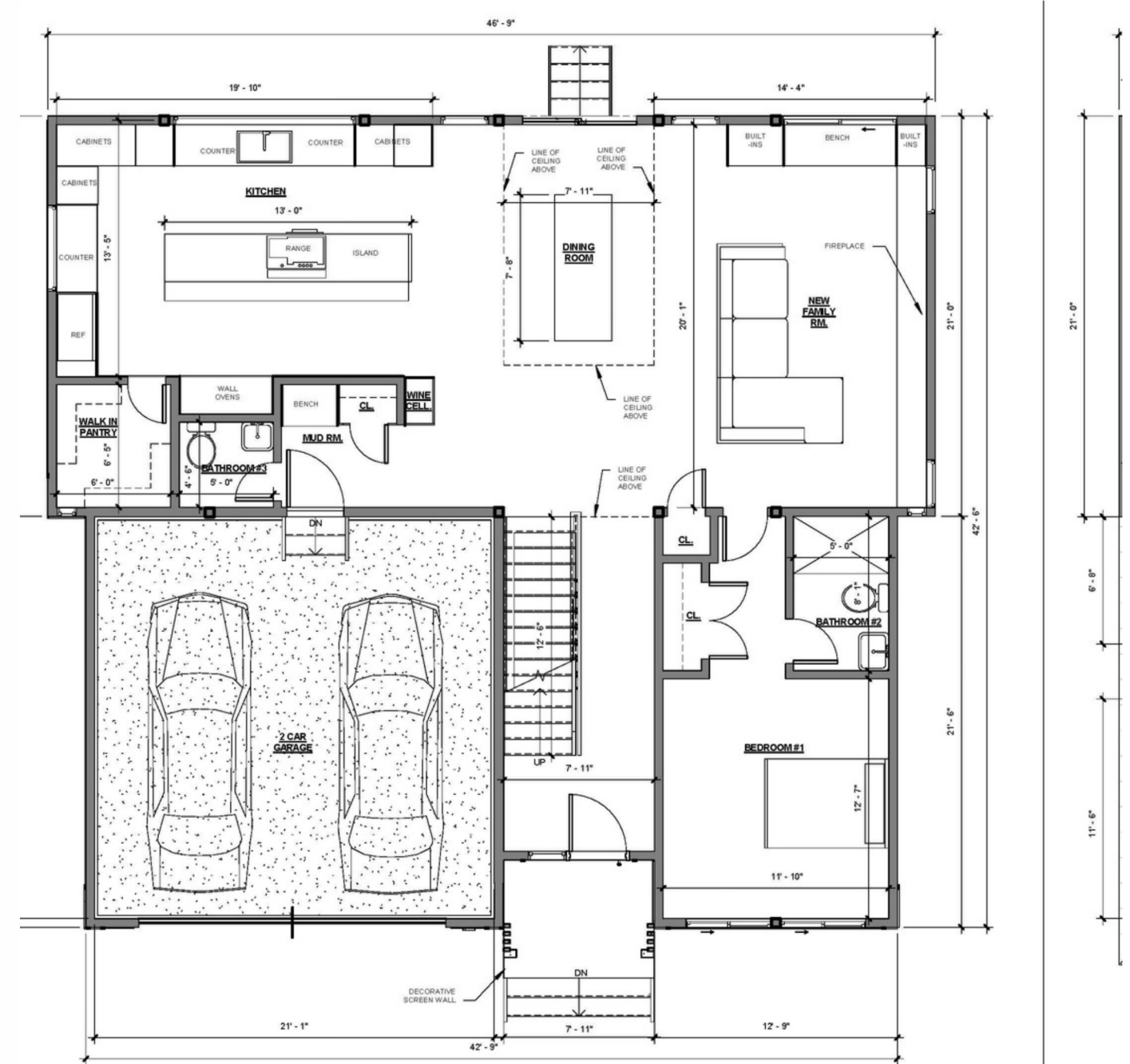
The property is situated on a quarter of an acre lot and the backyard features a stoned patio and two tier . Surrounded by mature oak trees, 5 Fernwood is an oasis giving the home the utmost seclusion.

Livingston is a highly desired community with top notch schools and close proximity to NYC.



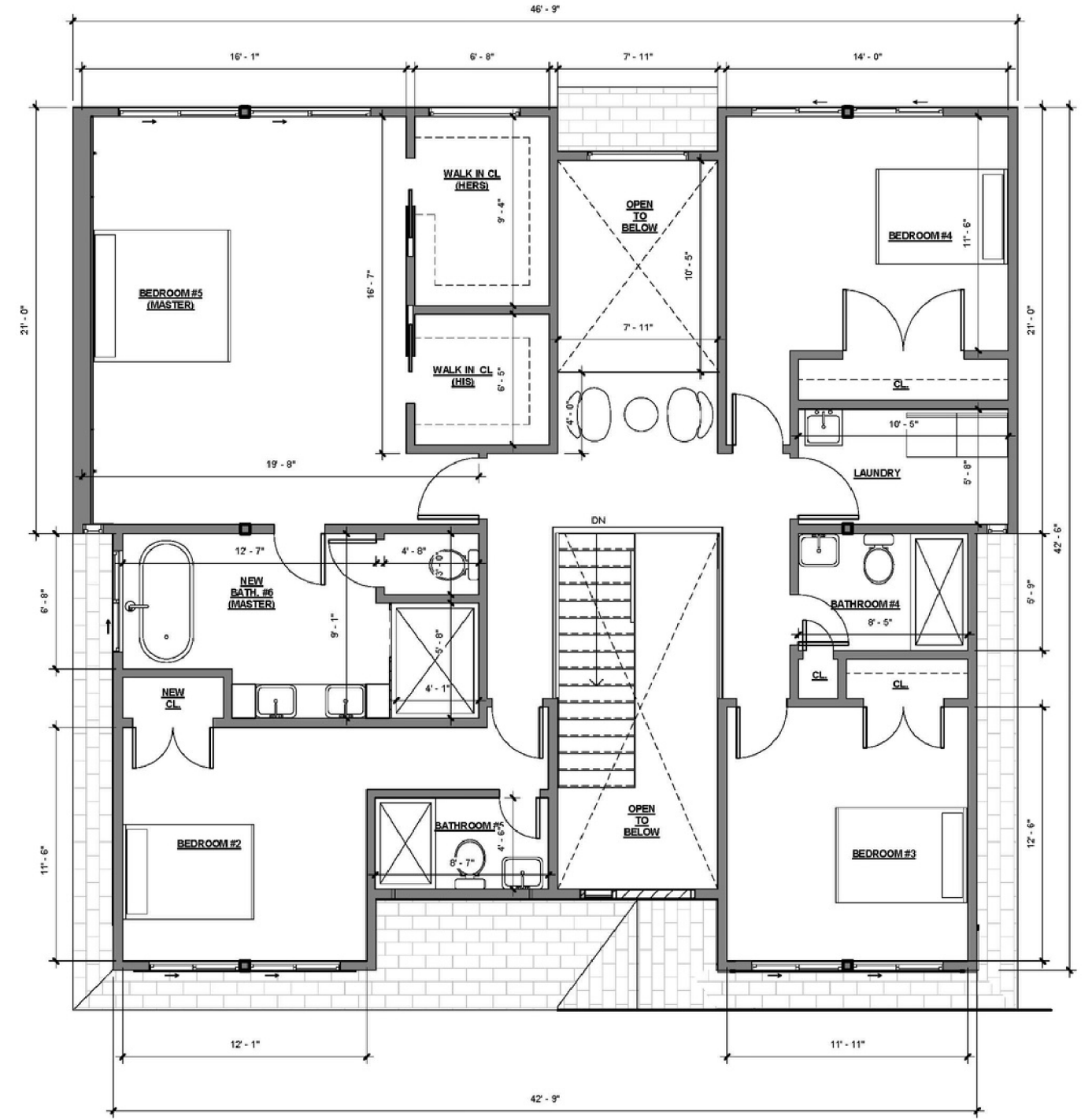
AERIAL VIEW

1ST LEVEL FLOORPLAN



⑤ 1ST FLOOR PROPOSED FLOOR PLAN
3/16" = 1'-0"

2ND LEVEL FLOORPLAN



⑥ 2ND FLOOR PROPOSED PLAN
3/16" = 1'-0"

FOYER AND BALCONY



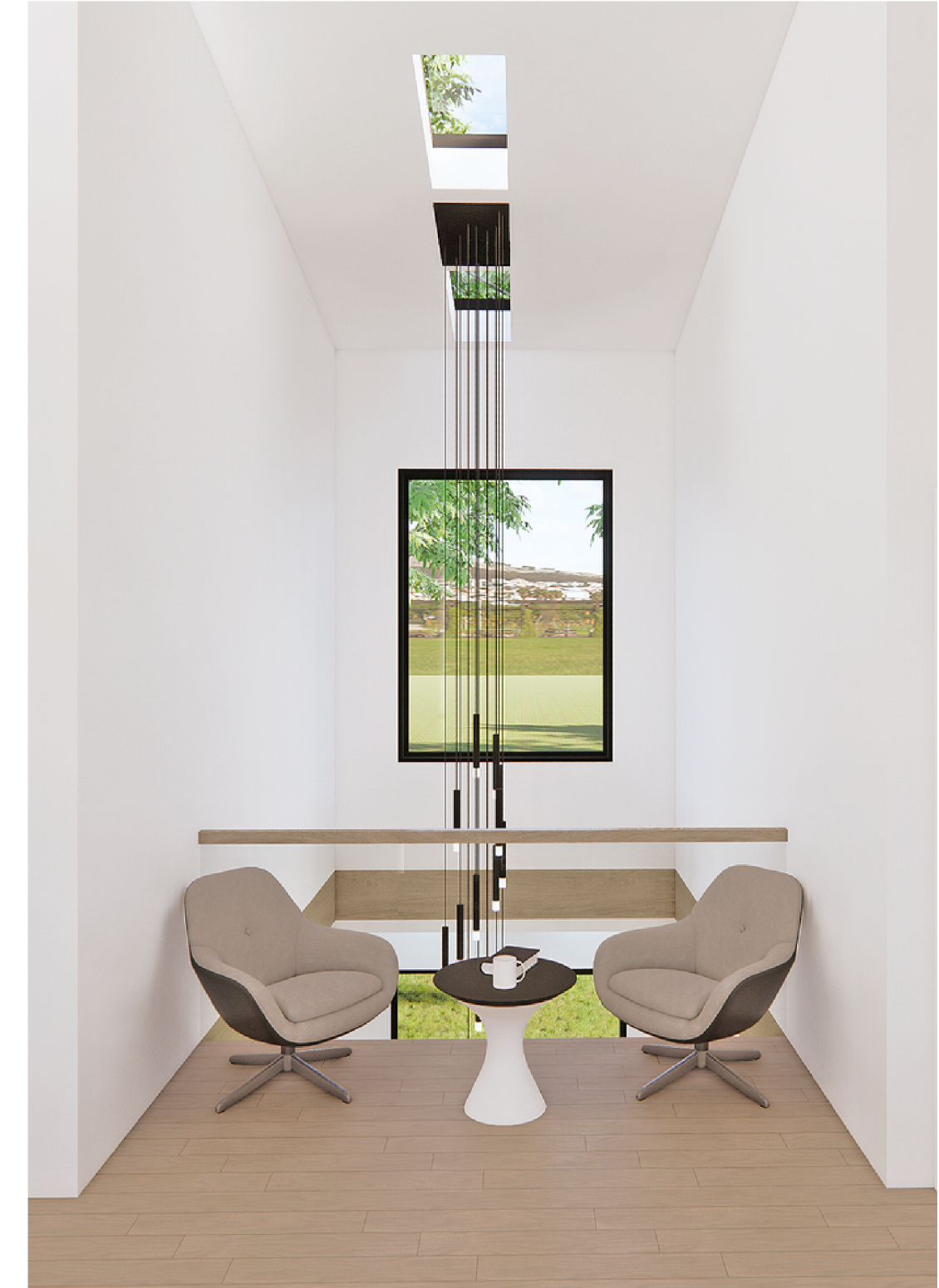
Chevron wood flooring in foyer

25 Ft high vaulted ceiling

Glass balcony and railing

15 Ft high contemporary chandeliers

4 Sky lights



LIVING ROOM

Accent lighting

Remote controlled gas fire place

Custom cabinetry



DINING AREA

wine cellar

soaring 15 Ft vaulted ceiling

custom chandeliers
1 (13 -15 Ft) 1 (10 -12 Ft)

OPEN CONCEPT



DINING AREA

white oak ceilings accents panels
with custom lights

glass patio sliding door

view of 2nd floor balcony





KITCHEN AREA

CUSTOM BUILT



KITCHEN AREA

Miele MasterCool 36 in. 19.6 cu ft.
Built in Smart Counter Depth
Bottom Freezer refrigerator with
Ice Maker- Custom Panel Ready

Zephyr 22' 110 CFM Dual Internal
Blower for Range Hoods

Miele 37 in Natural Gas Cooktop
with 5 Sealed Burners

Miele Pureline Series 24' 2.9 Cu Ft.
Electric Wall Oven with Standard
Convection & Self Clean-Clean
Touch Steel



KITCHEN AREA

13 Ft custom island

Custom paneled wall panels

Custom cabinetry

6x6.5 ft walk in pantry

Custom appliance garage with
microwave

(2) Fixed windows above sink and
countertop



PRIMARY BEDROOM

3 sky lights

15 ft vaulted ceiling

white oak paneled walls



PRIMARY BEDROOM

custom pella windows

accent light

white oak hardwood floors

double primary closet



PRIMARY BATH

Custom vanity

Freestanding tub

Glass enclosed shower with
double rain shower heads



PRIMARY BATH

Smart mirror

Custom wood accent wall
and shelving

SITE WORK DETAILS

(2) French Drain
Sump Pump
Belgium Block
Asphalt driveway

LANDSCAPE DETAILS

Aluminum Fence
Tress
Pavers Patio

INTERIOR DETAILS

9 Ft Ceiling Height
Foyer and Dining Area 25 Ft Ceiling Height
(2) Skylights in Dining Area
(2) Skylights in Foyer
(2) 15 Ft high Contemporary Chandelier
Remote Controlled Gas Fireplace with
custom tile and wood panel

EXTERIOR DETAILS

PVC, Wood Paneling and Vinyl
Metal and Glass Door
Asphalt Shingle Roof
Black sofit

Pella Windows
Strip Light Fixture
2 car garage (1) 16x8 Ft sized
garage door

UTILITY DETAILS

(2) Zone HVAC - Smart Nest Thermostat
New Water Line
New Sewer Line

3,200 SF first and second floor
1,500 SF basement
6 Bedrooms
5.5 Bathrooms
Smart washer and dryer (gas)
Custom kitchen with Miele panel appliances
5 inch white oak hardwood floors



STAIRS

Custom stairs

Glass railing

SMART SYSTEM

Smart Nest thermostat

Smart interior and exterior lighting

Smart garage door

RING door bell

EXODUS
REAL ESTATE

SAMANTHA LAMPTEY

B R O K E R / O W N E R

Office: 732 737 9013

Mobile: 404 903 3773

Email: lamptey@exodus-re.com

Address: 1200 Morris Turnpike Short Hills NJ 07078

Website: www.exodus-re.com

