

WWW.EXODUSDEVELOPS.COM



CONTEMPORARY  
MASTERPIECE

PRESENTED BY

SAMANTHA LAMPTEY  
LICENSED REAL ESTATE BROKER

5 FERNWOOD ROAD LIVINGSTON, NJ 07039

732 737 9013

EXODUS  
REAL ESTATE

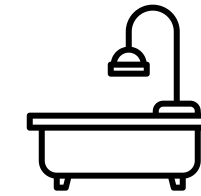


**6**



**Bed**

**5.5**



**Bath**

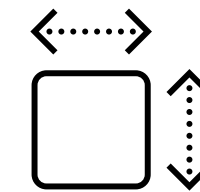
**2**



**Garage**

**3,220**

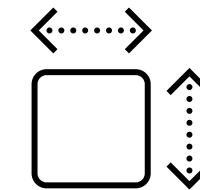
1st and 2nd level



**SF**

**1500**

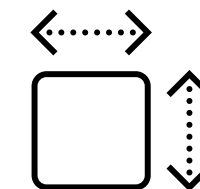
Basement



**SF**

**4700**

Total Living



**SF**

## ABOUT 5 Fernwood

**5 Fernwood is a contemporary masterpiece featuring 3,220 SF of living space and 1,500 SF of basement. Exquisitely designed with six -bedrooms, five and a half -bath this home includes two levels anchored by a striking custom staircase.**

**This smart home offers tranquility and an all-inclusive open floor plan upon a serene grand entrance leading you to soaring 25 ft high vaulted ceilings at the peak with impeccable detailed white oak wood ceiling accents and feature window. The custom chef's kitchen exudes opulence holding Miele appliances and custom Italian panel cabinetry with a tailored built island featuring a blend of white oak and quartz.**

**Additional features of the first level includes a guest en suite, wine cellar, adjacent to a formal dining area with cove lighting accentuated by white oak wood feature in ceiling .**

**The second level features 4 generous sized bedrooms, 3 full bathroom, full laundry room, tremendous closet space and access to storage attic. All second floor bedrooms feature 15 ft soaring vaulted ceilings at the peak and custom en suite bathroom with varying designs.**

**The primary suite features white oak paneled wall, vaulted ceiling with sky lights , custom built walk-in closet and an exquisite en suite bathroom with double-head walk-in rain showers, free-standing soaking tub and matte black fixtures.**

**The lower entertainment level offers a bedroom, full bathroom and entertainment/ family room, gym/ office/ storage area.**

**The property is situated on approximately quarter of an acre lot and the backyard. Surrounded by mature oak trees, 5 Fernwood is an oasis giving the home the utmost seclusion.**

**Livingston is a highly desired community with top notch schools and close proximity to NYC. [5FERNWOOD.COM](http://5FERNWOOD.COM)**

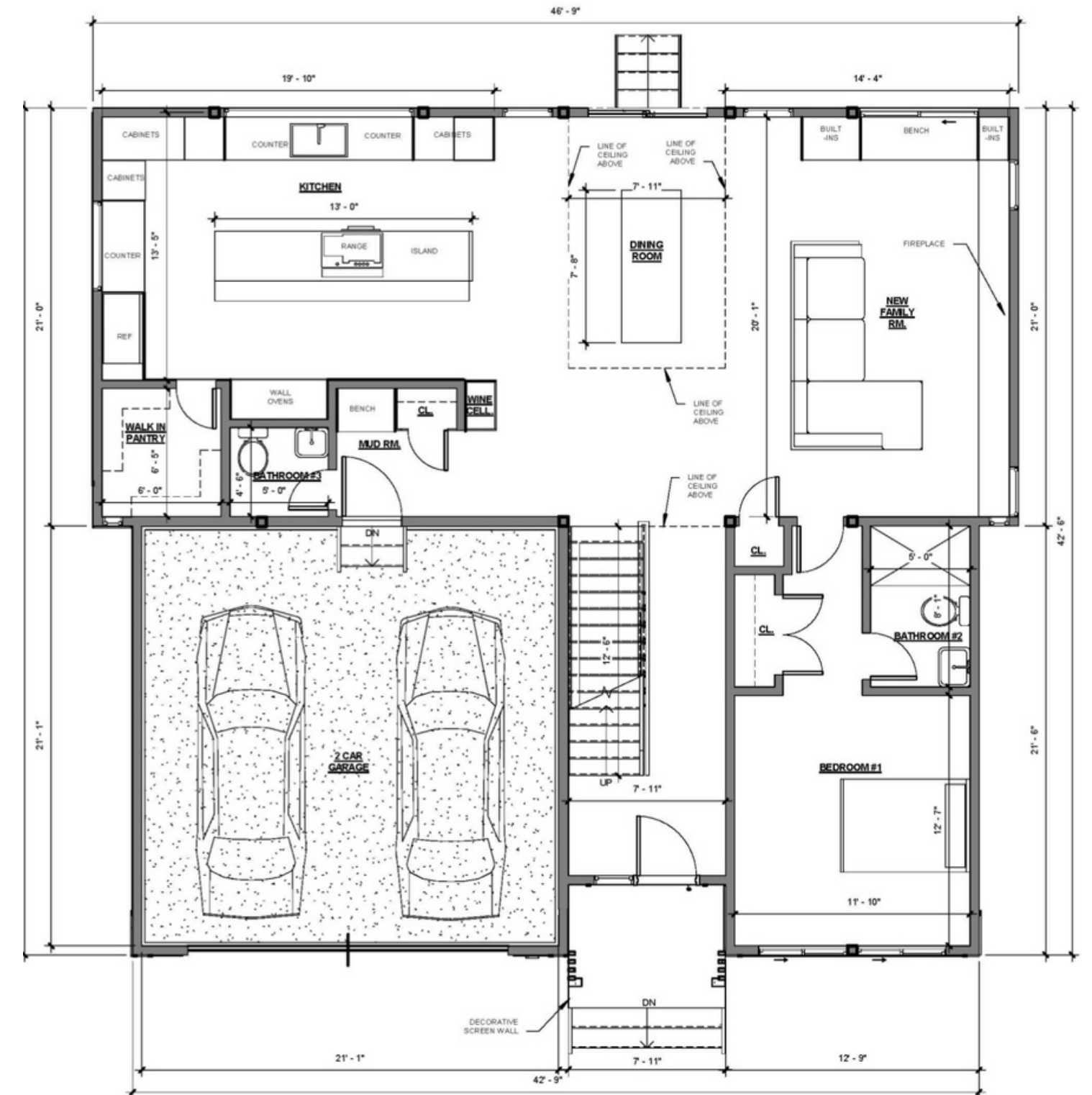


# **AERIAL VIEW**

# 1ST LEVEL FLOORPLAN



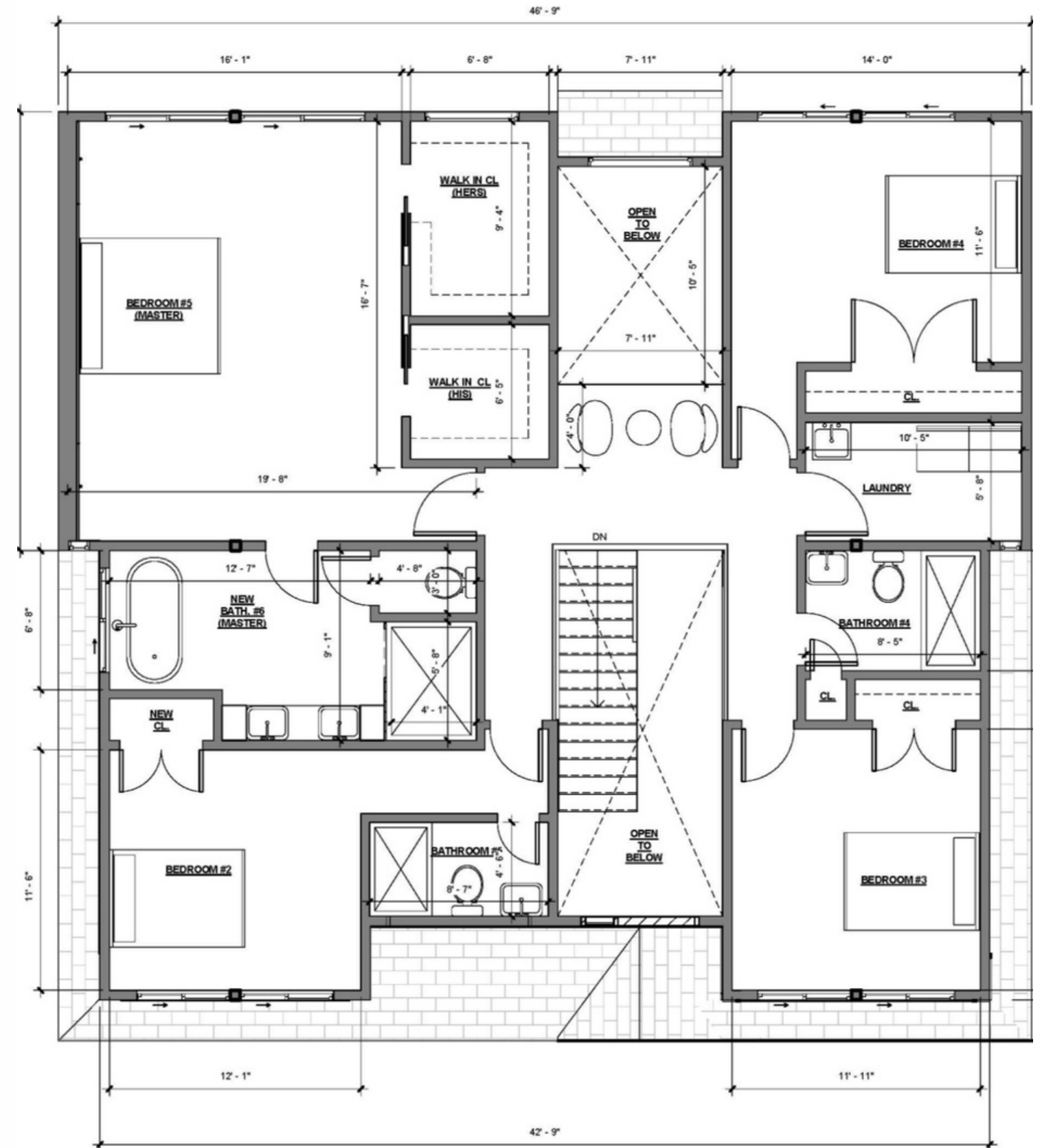
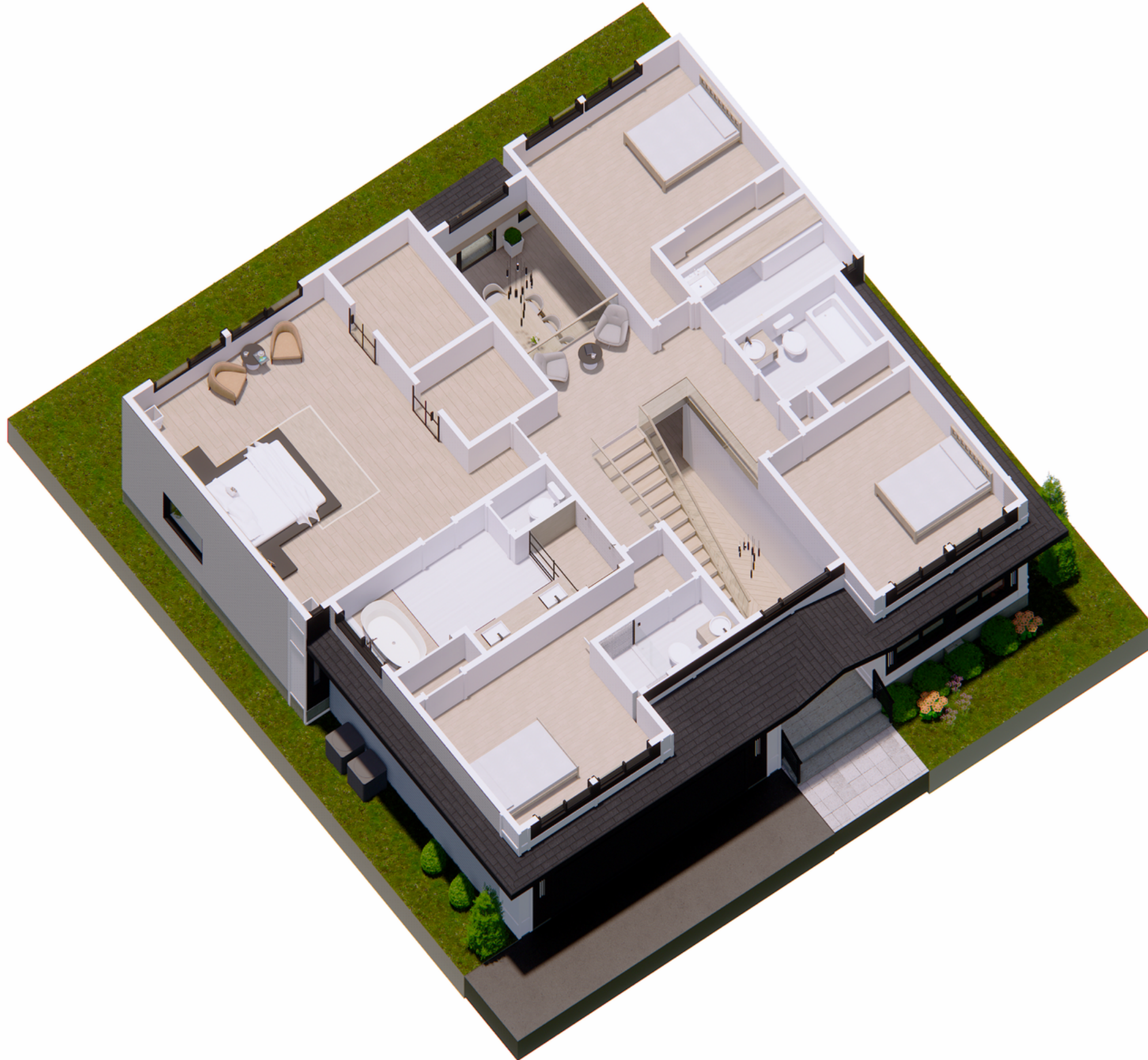
## RENDERING



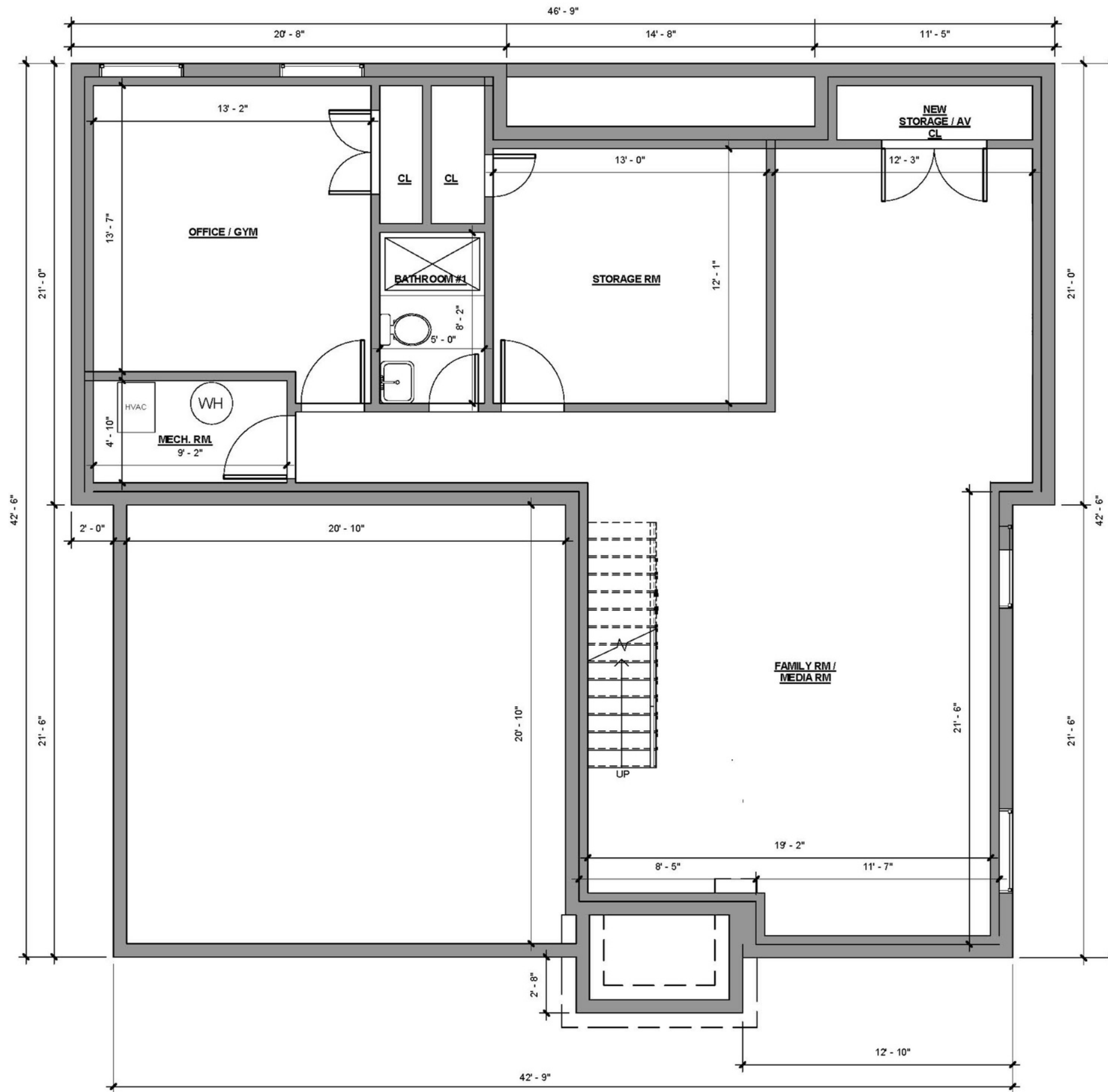
5 1ST FLOOR PROPOSED FLOOR PLAN  
3/16" = 1'-0"



# 2ND LEVEL FLOORPLAN RENDERING



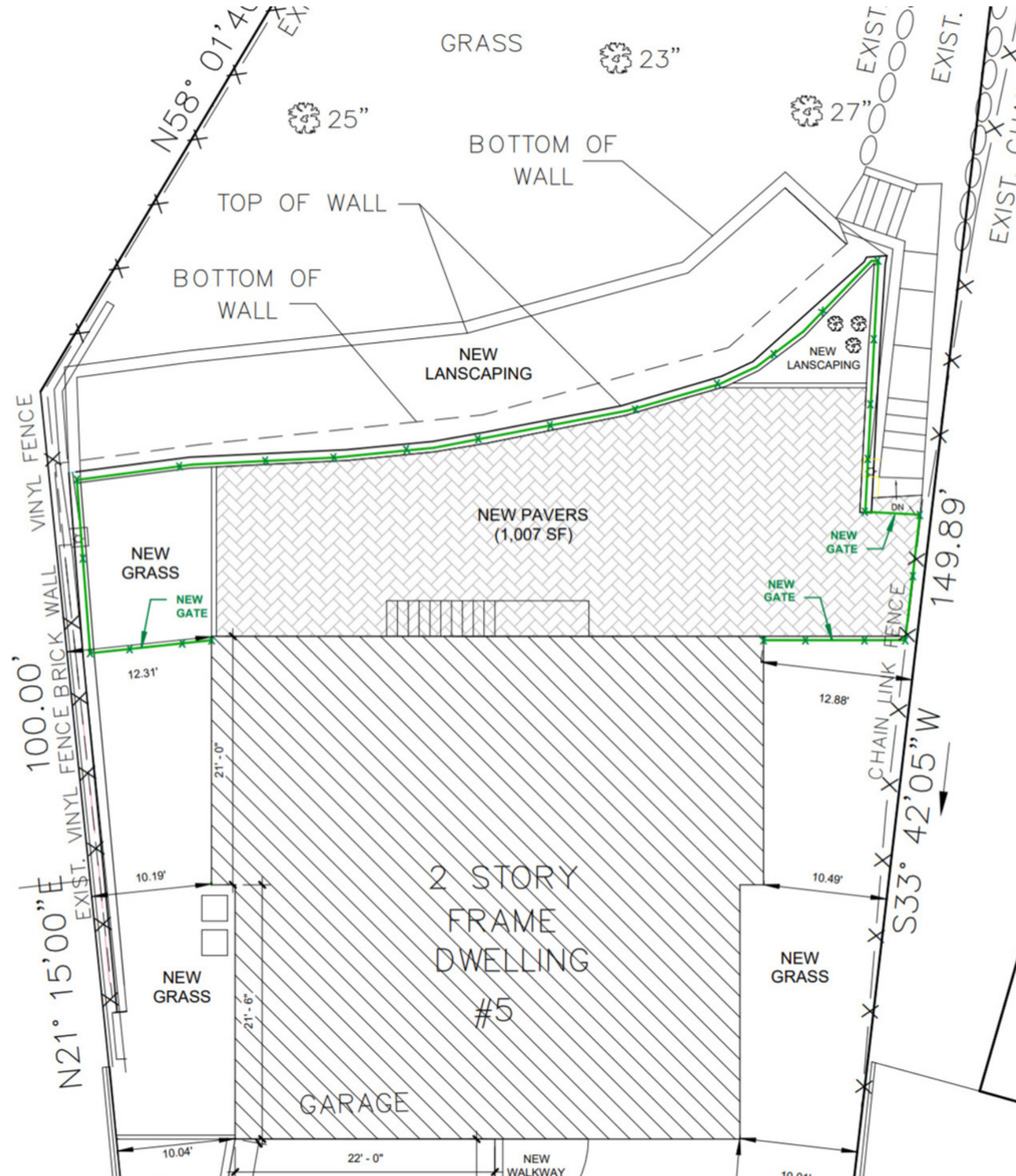
⑥ 2ND FLOOR PROPOSED PLAN  
3/16" = 1'-0"



# BASEMENT FLOORPLAN

④ BASEMENT PROPOSED PLAN  
3/16" = 1'-0"

# SITE PLAN



Example of metal railing





# FOYER AND BALCONY



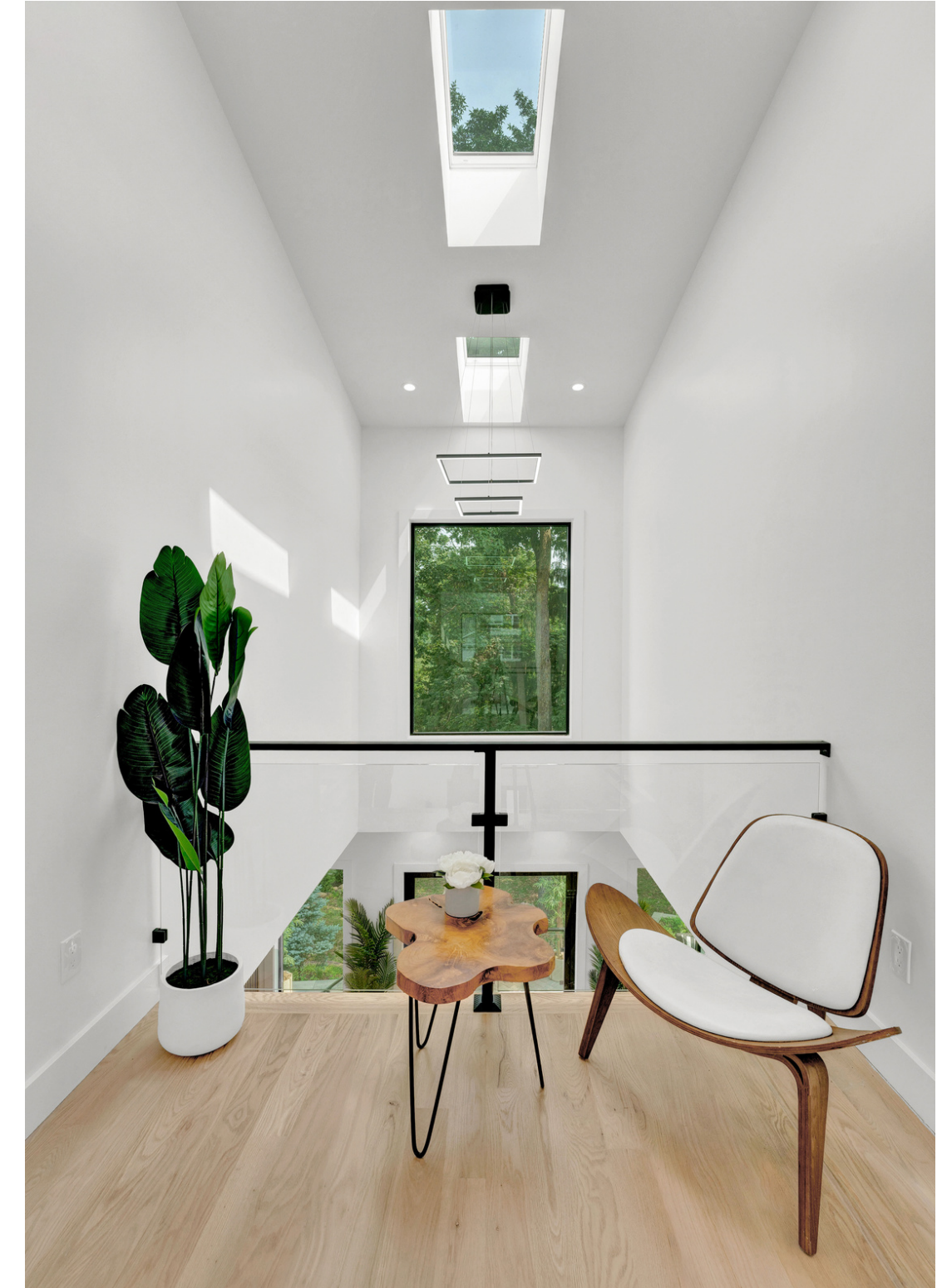
Chevron wood flooring in foyer

25 Ft high vaulted ceiling at the peak

Glass balcony and railing

4 Sky lights

Modern LED chandelier



# LIVING ROOM

Accent LED strip lighting

Remote controlled gas fire place

Custom push open cabinet doors  
featuring AV compartments

Custom bench seating

TV and furniture not included-  
Only for staging purposes



# DINING AREA

Wine cellar

Soaring 25 Ft vaulted ceiling at the peak

Modern LED chandelier

Glass patio sliding door

**OPEN CONCEPT**





# KITCHEN AREA

**CUSTOM BUILT**



# KITCHEN AREA

Miele MasterCool 36 in. 19.6 cu ft.  
Built in Smart Counter Depth  
Bottom Freezer refrigerator with  
Ice Maker- Custom Panel Ready

Zephyr 22' 1100 CFM Dual Internal  
2 Blowers for Range Hoods

Miele 37 in Natural Gas Cooktop  
with 5 Sealed Burners

Miele Pureline Series 24 inch  
(can be upgraded)



# KITCHEN AREA

13 Ft custom island

Quartz countertop

Custom paneled wall panels

Custom push open cabinetry

6x6.5 ft walk in pantry with shelves

Custom appliance garage with  
microwave (not Miele)

Fixed window above sink

Fixed window above countertop

# MUD ROOM

RENDERING



Custom push open cabinetry  
with storage closets

Bench seating





# PRIMARY BEDROOM

3 sky lights

15 ft vaulted ceiling at the peak

White oak slat wall panels

LED accent strip light





# PRIMARY BEDROOM

Custom pella windows

White oak hardwood floors

Double primary closet

Black frame/ glass barn  
doors

Cable ready



# PRIMARY BATH

Custom vanity

Glass enclosed shower with  
double rain shower heads

Toscano Intelligent Comfort  
Height 1-Piece 1.0 GPF /1.6 GPF  
Dual Flush Elongated Toilet in  
White, Seat Included

Toilet room



# PRIMARY BATH

LED smart/ anti fog mirror

Custom wood accent wall  
and shelving

Freestanding tub



# LAUNDRY ROOM

## RENDERING

LG washer and dryer

Black Sink

Cabinetry and shelving

Fixed window

# PRIMARY WALK IN CLOSET

RENDERING





## **BEDROOM 2,3,4**

15 ft vaulted ceiling at the peak

Cable ready

# STAIRS

Custom stairs

Glass railing on 1st  
floor and 2nd floor

# SMART SYSTEM

Smart Nest thermostat

Smart interior and exterior lighting

Smart garage door opener

Nest (RING) door bell





# PATIO

1007 SF stone pavers

42 inch railing installed to fully enclose first level patio  
(included) (black metal)



## SITE WORK DETAILS

French Drain  
Sump Pump  
Belgium Block  
Asphalt driveway

## LANDSCAPE DETAILS

Pavers Patio  
Seeded grass in the backyard

## INTERIOR DETAILS

9 Ft Ceiling Height  
Foyer and Dining Area 25 Ft ceiling height at the peak  
(2) Skylights in Dining Area  
(2) Skylights in Foyer  
(2) 15 Ft high Contemporary Chandelier  
Remote Controlled Gas Fireplace with  
Custom tile and wood panel

## EXTERIOR DETAILS

PVC, Wood Paneling and Vinyl  
Metal and Glass Door  
Asphalt Shingle Roof  
Black soffit

Pella Windows  
Strip Light Fixture  
2 car garage (1) 16x8 Ft sized  
1 garage door  
Mailbox included

## UTILITY DETAILS

(2) Zone HVAC - Smart Nest Thermostat  
New Water Line  
New Sewer Line

3,220 SF first and second floor  
1,500 SF basement  
6 Bedrooms  
5.5 Bathrooms  
Smart washer and dryer (gas)  
Custom kitchen with Miele panel appliances  
5 inch white oak hardwood floors

**EXODUS**  
REAL ESTATE

## **SAMANTHA LAMPTEY**

L I C E N S E D   R E A L   E S T A T E   B R O K E R

**Office: (732) 737 9013**

**Mobile: (404) 903 3773**

**Lampzey@exodus-re.com**

**Website: [www.exodus-re.com](http://www.exodus-re.com)**

**Address: 1200 Morris Turnpike Short Hills NJ 07078**

